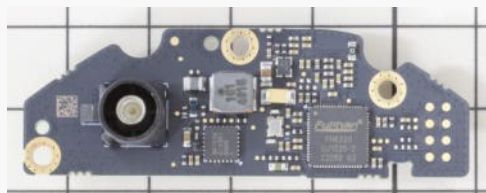
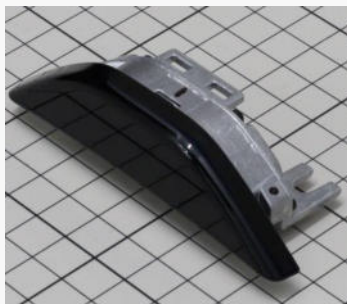


Driver Monitoring System: Xiaomi SU7 Teardown Report



Xiaomi SU7 (from Web info)

<https://hu.motor1.com/news/703064/xiaomi-su7-onallo-parkolas-video/>



PCB

Overview of Driver Monitoring System

Overview

Xiaomi, the Chinese electrical appliance maker announced its first battery electric vehicle (BEV) Xiaomi SU7 in March 2024.

This vehicle has installed a Driver Monitoring System.

Driver Monitoring System detects signs of driver distraction and exhaustion to help the driver to be safe. In addition, the presence or absence of an occupant and its state (such as an infant in a high temperature vehicle) are detected, and a dangerous state is obtained. There is also an information that the system will be required to be installed in new cars in the future.

This is a teardown report of driver monitoring System installed in Xiaomi SU7 with grade Max.

Product features

- Size: 29mm (W) ×93mm (L) ×36mm (H)
- Weight: 42g

Report Contents (19 pages)

- Product teardown, parts measurement (size & weight)
- Identification of key ICs on the PCB (including datasheet, if we found).
- Connection Diagram

Report price

Delivery one week after order placement

Please contact us for report pricing

Table of Contents

		Page
<u>Summary</u>		
Table 1	Product Information	... 3
<u>Product Teardown</u>		
	Product Overview	... 4
	Installation Status 【Bottom Cover】	... 5
	Installation Status 【Main PCB】	... 6
	Installation Status 【Top Cover】	... 7
	Installation Status 【Gasket】	... 8
	Installation Status 【Infrared LED Drive PCB】	... 10
	Installation Status 【Housing】	... 11
<u>Overview</u>		
Fig. 1-1	Main PCB Overview	... 12
Fig. 1-2	Infrared LED Drive PCB Overview	... 13
Fig. 2-1	Moisture-Proofed Area of Main PCB	... 14
Fig. 2-2	Moisture-Proofed Area of Infrared LED Drive PCB	... 15
Fig. 3-1	Identification of Key ICs (manufacture, function, etc.) on Main PCB (Top View)	... 16
Fig. 3-2	Identification of Key ICs (manufacture, function, etc.) on Main PCB (Bottom View)	... 17
Fig. 3-3	Identification of Key ICs (manufacture, function, etc.) on Infrared LED Drive PCB (Top View)	... 18
<u>Connection</u>		
Fig. 4	Connection Diagram	... 19

