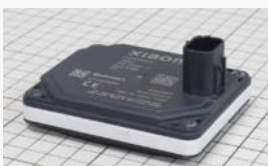


Millimeter-Wave Radar: Xiaomi SU7 Teardown Report

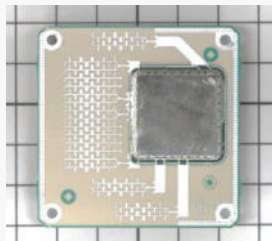


Xiaomi SU7 (from Web info)

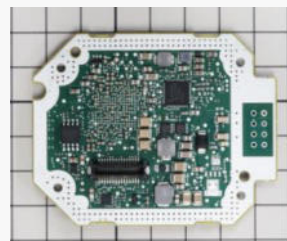
<https://hu.motor1.com/news/703064/xiaomi-su7-onallo-parkolas-video/>



**Overview of
Millimeter-Wave Radar**



Antenna PCB



Control PCB

Overview

Xiaomi, the Chinese electrical appliance maker announced its first battery electric vehicle (BEV) Xiaomi SU7 in March 2024. Xiaomi SU7 is available in three grades-Standard(RWD), Pro(RWD), and Max(AWD). This vehicle is equipped with Xiaomi Pilot, a newest automated driving system. This is a teardown report of millimeter-radar installed in Xiaomi SU7 with grade Max.

Product features

- Manufacturer: Continental, Model Number: ARS513XM14 (Model ARS5-B)
 - Adaptive cruise control system
 - Emergency brake assist compatible with EuNCAP18, EuNCAP20 and other NCAP standards
 - Traffic Continuous Display, Traffic Jam Assist (in combination with the camera)
 - Occlusion detection/automatic alignment
 - Safety Integrity Level complied with altitude measuring function ISO 26262: EBA: max. B
 - Compatible with spectrum approval integration compliance cameras, navigation systems, etc.
- in the major countries ; EU/Russia/USA/Canada/Japan/Korea/China/Australia

Report Contents (17 pages)

- Product teardown (until PCB removed), parts measurement (size & weight)
- Identification of key ICs on the PCB (including datasheet, if we found).

Report price

Delivery one week after order placement

Please contact us for report pricing

Table of Contents

| | | | Page |
|--------------------------------|---|-----|------|
| <u>Summary</u> | | | |
| Table 1 | Product Information | ... | 3 |
| <u>Product Teardown</u> | | | |
| | Product Overview | ... | 4 |
| | Installation Status 【Top Cover】 | ... | 5 |
| | Installation Status 【Control PCB】 | ... | 6 |
| | Installation Status 【Bottom Cover】 | ... | 8 |
| | Installation Status 【Antenna PCB】 | ... | 9 |
| | Installation Status 【Housing】 | ... | 10 |
| <u>Overview</u> | | | |
| Fig. 1-1 | Antenna PCB Overview | ... | 11 |
| Fig. 1-2 | Identification of Key ICs (manufacture, function, etc.) on Antenna PCB | ... | 12 |
| Fig. 1-3 | Control PCB Overview | ... | 13 |
| Fig. 1-4 | Identification of Key ICs (manufacture, function, etc.) on Control PCB | ... | 14 |
| Fig. 1-5 | Moisture-Proofed Area of Antenna PCB | ... | 15 |
| Fig. 1-6 | Moisture-Proofed Area of Control PCB | ... | 16 |
| <u>Connection</u> | | | |
| Fig. 2 | Connection Diagram | ... | 17 |

