



# New Teardown Report: Daihatsu Move mini vehicle

MarkLines Co., Ltd.

March 6, 2015

Copyright © 2015 MarkLines Co., Ltd. All Rights Reserved

# Daihatsu Move Teardown

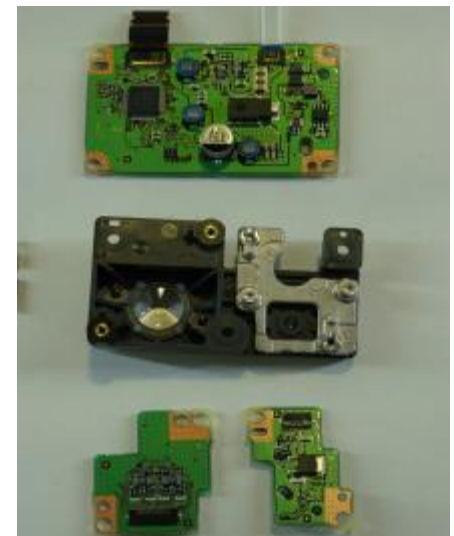
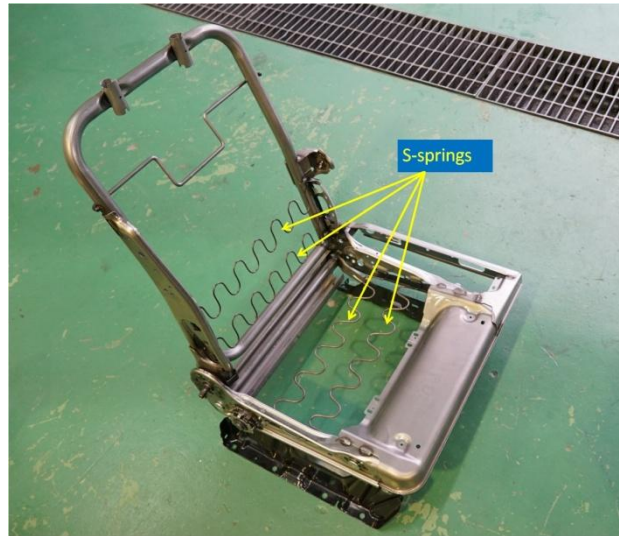
- ▶ MarkLines Co., Ltd released two new teardown reports for the Japanese Daihatsu Move mini vehicle (fifth-generation, X-turbocharged VS grade).
- ▶ The Daihatsu Move teardown was held on January 21 through 27, 2015, by the Hiroshima Industrial Promotion Organization. The teardown event was performed by the Hiroshima Kokusai Gakuin Automotive Junior College in Hiroshima Prefecture, Japan.



(Note): The sixth-generation Daihatsu Move was launched in December 2014.

# Daihatsu Move Teardown

- ▶ Mini vehicles are often considered synonymous with low-cost cars. However, the teardown proved that the Daihatsu Move is on par with, if not better than, B-segment cars in terms of specifications. All parts are manufactured with craftsmanship to ensure competitiveness in performance and quality. For instance, costs are duly allotted to the chassis and seat frame that are normally unseen by users, to deliver quality performance and a comfortable riding experience.
- ▶ The chassis suspension components are comparable with those found in larger and heavier B-segment vehicles. The seat frame has two S-springs in both the cushion and seatback, which makes the Daihatsu Move superior to a B-segment car. These support the riding comfort and quietness that the car is reputed for.
- ▶ The Daihatsu Move X-turbocharged VS grade Smart Selection SA (Smart Assist) version is equipped with a Vehicle Stability Control (VSC) system and emergency brake assist which uses front-mounted laser sensors.



# Daihatsu Move Teardown

- ▶ Please refer to the following reports for additional details:
    - [Daihatsu Move Teardown \(Part 1\): Equipment comparable to B-segment cars  
Suppliers list, chassis, seats, and electrical components](#)
    - [Daihatsu Move Teardown \(Part 2\): High fuel economy and improved performance  
Turbo engine and CVT with 3-shaft gear train has lightweight and compact design](#)
- (Please register as a free or corporate member to read the reports.)
- ▶ A third report will be released at a later date, describing the Move's body frame.





# Teardown Report Series

---

Reports for Users & Free Members (Note)	Free Reports
VW Polo (Dec. 2014) <a href="#">(Part 1) Engine compartment and driver's seat area</a> <a href="#">(Part 2) 1.2-liter TDI diesel engine and suspensions</a>	Toyota Aqua (Prius c) (Nov. 2012) <a href="#">(Part 1) Part suppliers and battery components</a> <a href="#">(Part 2) Hybrid systems behind the 35.4km/liter car</a>
Nissan Note (Sep. 2014) <a href="#">(Part 1) Major safety technology and advanced driver assistance systems</a> <a href="#">(Part 2) Drive unit and supercharger</a>	Nissan Leaf <a href="#">(Part 1) Benchmarking systems and components</a> (Mar. 2012) <a href="#">(Part 2) Main components disassembled</a> (Sep. 2012) <a href="#">(Part 3) Body cutaway</a> (Nov. 2012)
Honda Accord Hybrid (Feb. 2014) <a href="#">(Part 1) PCU and vehicle chassis components</a> <a href="#">(Part 2) Battery components and electric servo brake system</a> <a href="#">(Part 3) Sport Hybrid i-MMD drive unit</a>	
Honda Fit Hybrid (Dec. 2013) <a href="#">(Part 1) Battery components &amp; brake system</a> <a href="#">(Part 2) Engine and transmission</a>	

(Note): If you register as a free member, you will have access to all MarkLines' content free of charge for 24 hours.

For free member registration, please click [here](#).

For inquiries on corporate member registration and website usage, please contact:

MarkLines Customer Support

Tel: +81-3-5785-1387 (9:00-17:30 (JST) Mon.-Fri. [except national holidays])

E-mail: [support@marklines.com](mailto:support@marklines.com)

# Corporate Profile

## [Headquarters]

Aoyama Tower Place 2F, 8-4-14 Akasaka Minato-ku, Tokyo 107-0052 Japan

[Date of Establishment] January 4, 2001

[Employees] 87 (on consolidated basis), 67 (on unconsolidated basis)

[President & CEO] Makoto Sakai

[URL] <http://www.marklines.com/en/>

[Business Activities] Operations of MarkLines Automotive Industry Portal

## Automotive Industry Portal

MarkLines Automotive Industry Portal is a one-stop B2B online information source for the automotive industry. The portal provides two kinds of services: research tools and marketing tools.

## Research Tools:

MarkLines provides information about the global automotive market, which is useful to all companies working in the industry. This allows companies to save time and money by using MarkLines instead of conducting independent research.

## Marketing Tools:

MarkLines has tools which promote a customer's products, technologies and services to over 90,000 MarkLines' members. MarkLines' members include various OEMs and parts suppliers around the world.

By providing services with these research tools and marketing tools, MarkLines supports its customers' procurement and marketing activities.



For press inquiries:

Kikkawa, Kitaura, Yukishima

Research Department, MarkLines Co., Ltd.

Tel: +81-3-5785-1385

e-mail: [research-dept@marklines.com](mailto:research-dept@marklines.com)